

An aerial photograph of a tropical coastline. The top half shows steep, green mountains with some clouds. The bottom half shows a coastline with a white sandy beach, a rocky shore, and clear turquoise water transitioning to deep blue ocean. A semi-transparent white box is overlaid on the middle of the image, containing the title text.

# Local View

## Hanalei & 'Anini

# Hanalei & 'Anini Overview

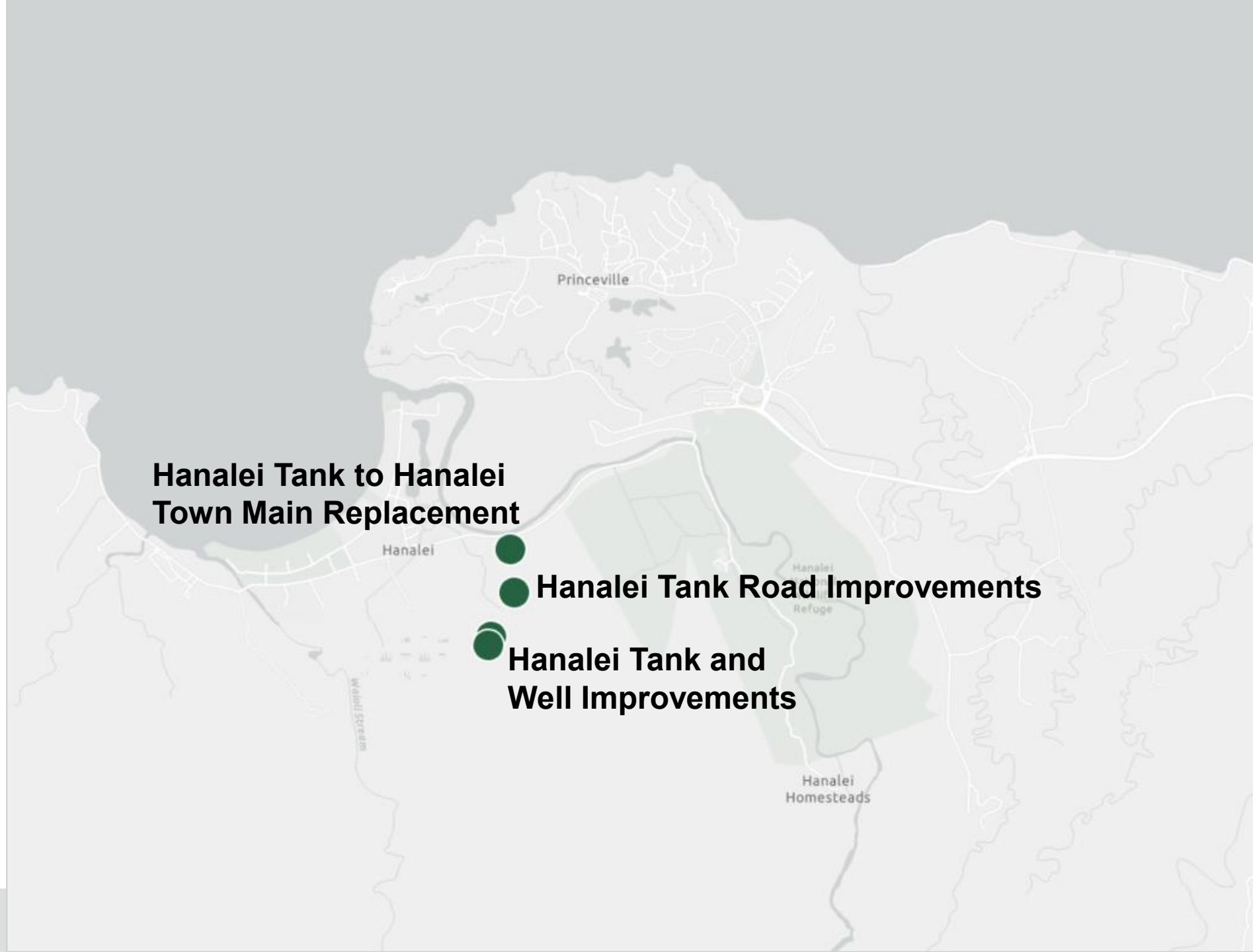
Approximately 3% of the island wide system

Parts of the system were constructed more than 100 years ago and will be more than 120 years old by the end of the planning period



# Hanalei & 'Anini Completed Projects

*Water  
infrastructure  
projects  
completed from  
2001 - 2025*



**Hanalei Tank to Hanalei  
Town Main Replacement**



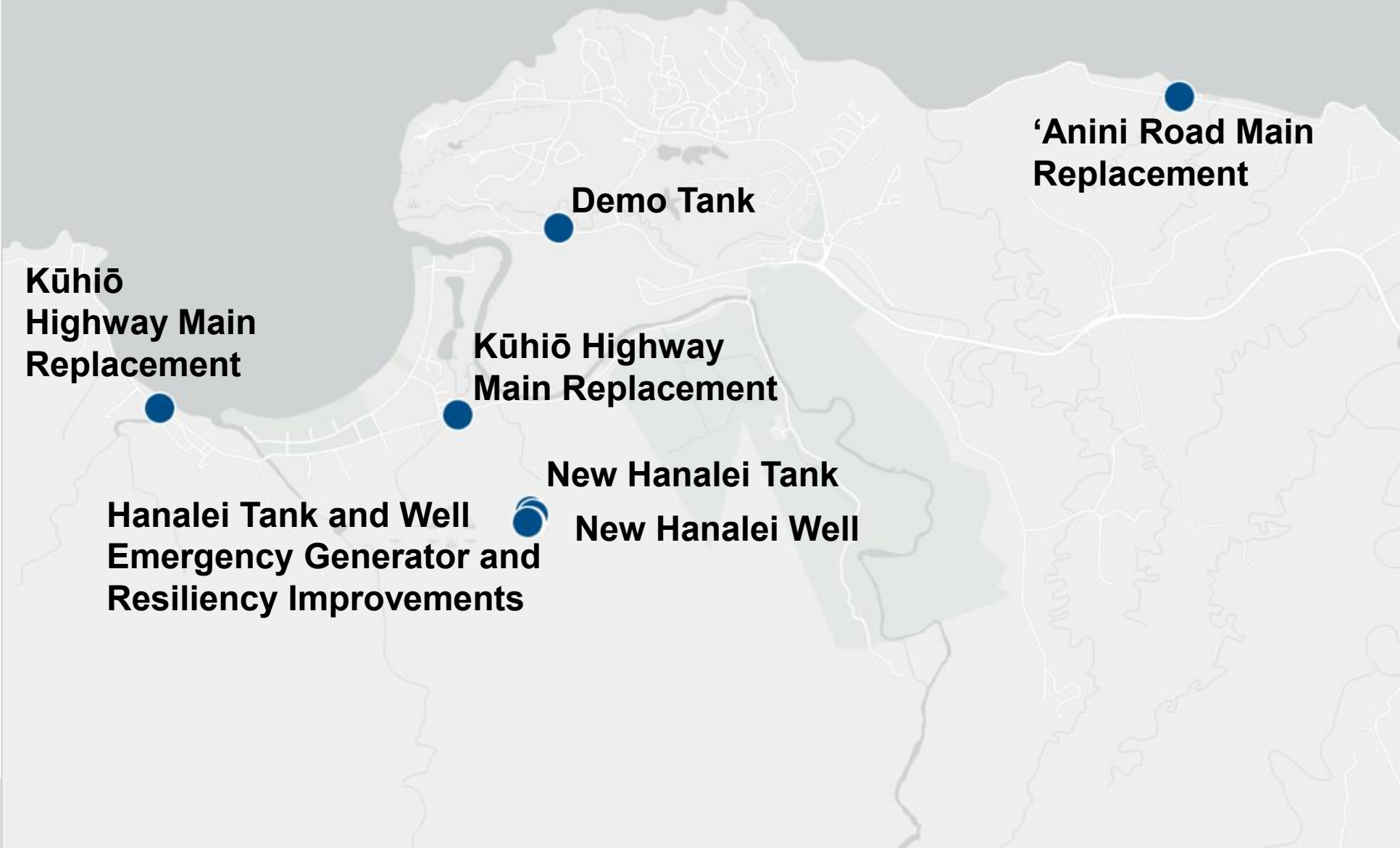
**Hanalei Tank Road Improvements**



**Hanalei Tank and  
Well Improvements**

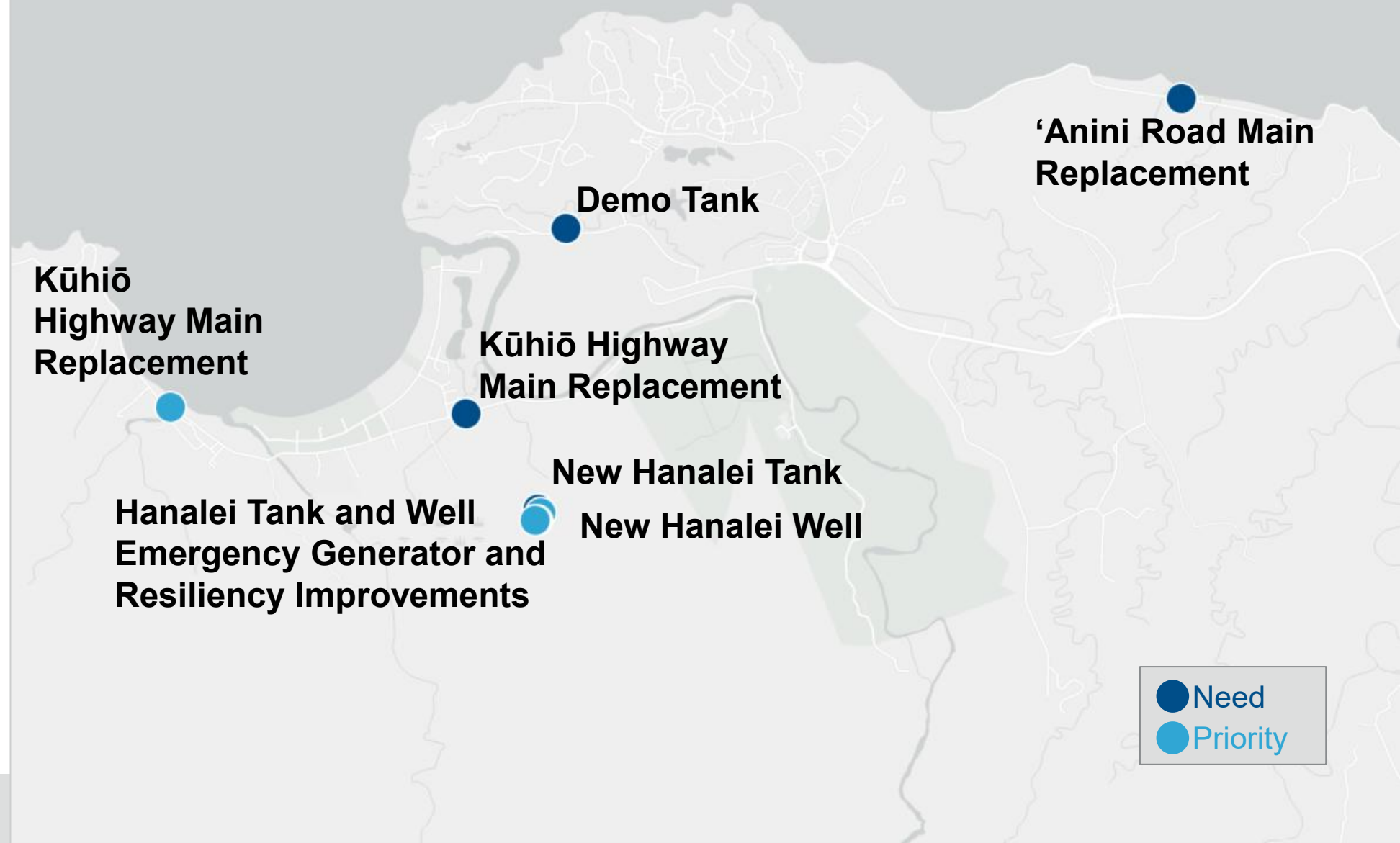
# Hanalei & 'Anini Needs

*Water infrastructure project needs identified in the Water Systems Investment Plan*

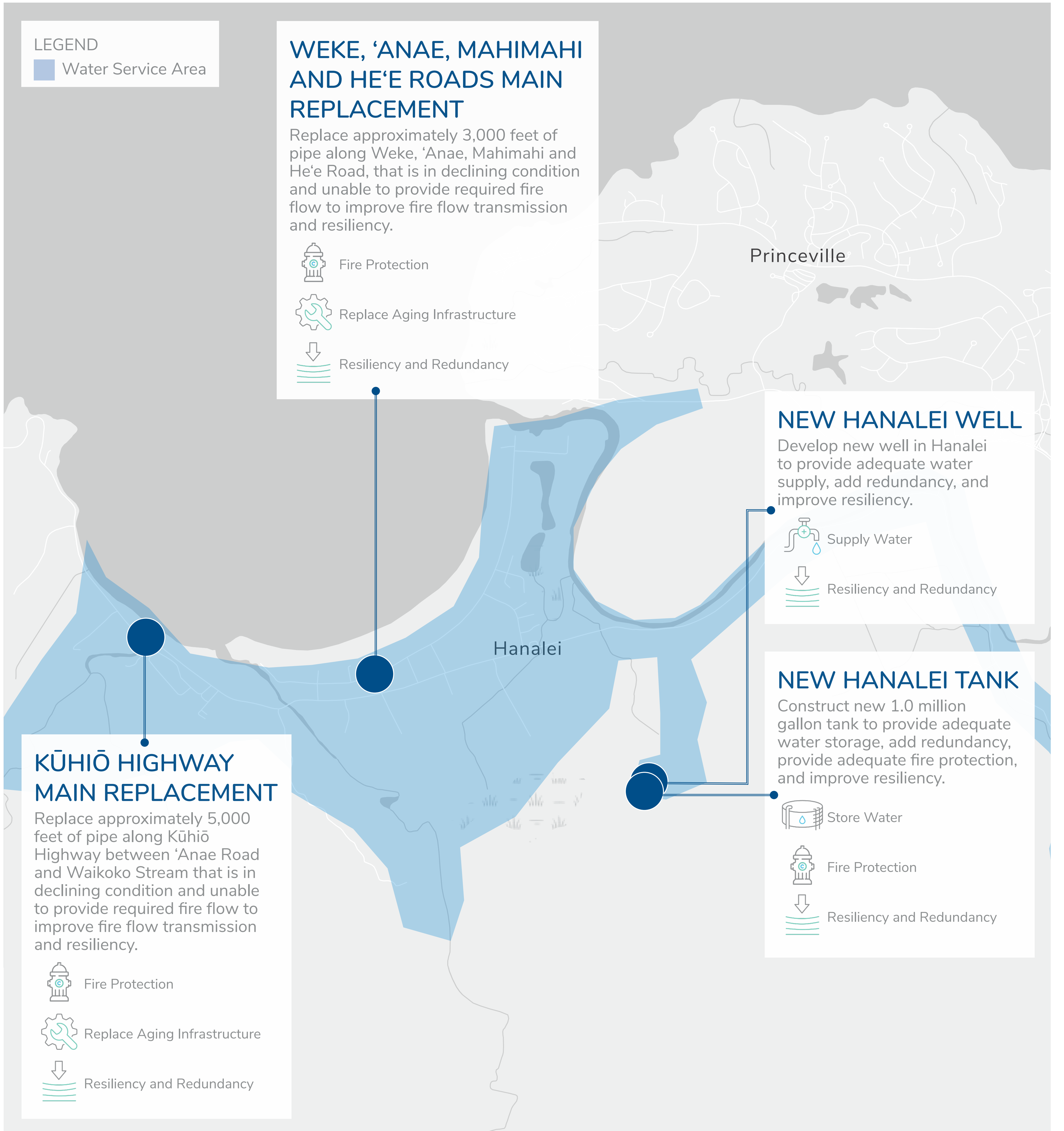


# Hanalei & 'Anini Priorities

*Priority projects  
funded through  
the proposed rate  
increase*



# Example Priority Projects Hanalei & 'Anini



## Questions or Comments?

[publicrelations@kauaiwater.org](mailto:publicrelations@kauaiwater.org)

(808) 245-5461 8:00AM to 4:30PM  
Mon-Fri (except holidays)

Scan for  
website

