

An aerial photograph of a tropical coastline. The top half shows steep, green mountains with some clouds. The bottom half shows a coastline with a white sandy beach, a rocky shore, and clear turquoise water transitioning to deep blue ocean. A semi-transparent white box is overlaid on the middle of the image, containing the title text.

# Local View

## Hā'ena & Wainiha

# Hā'ena & Wainiha Overview

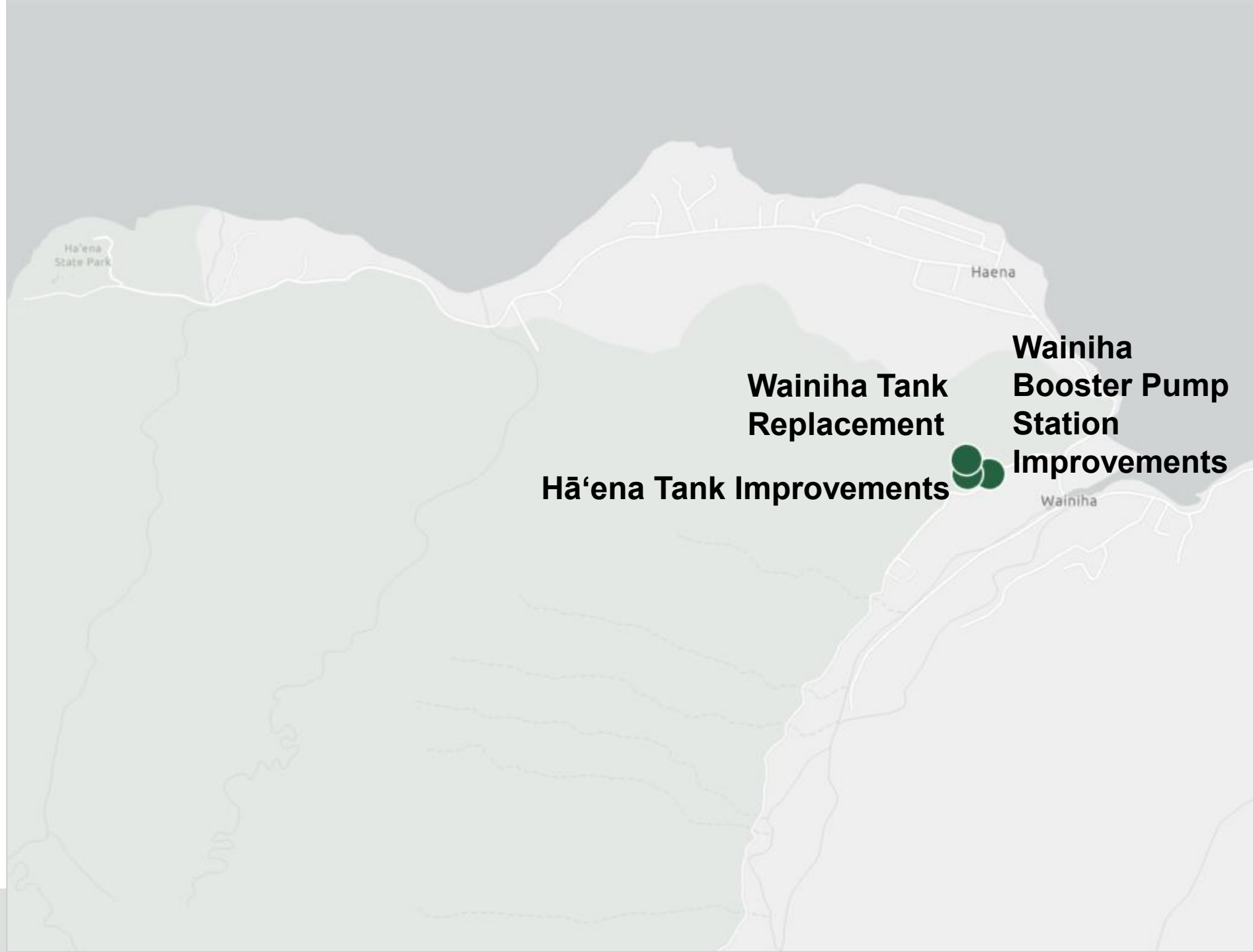
Approximately 2% of the island wide system

Parts of the system were constructed more than 60 years ago and will be more than 80 years old by the end of the planning period



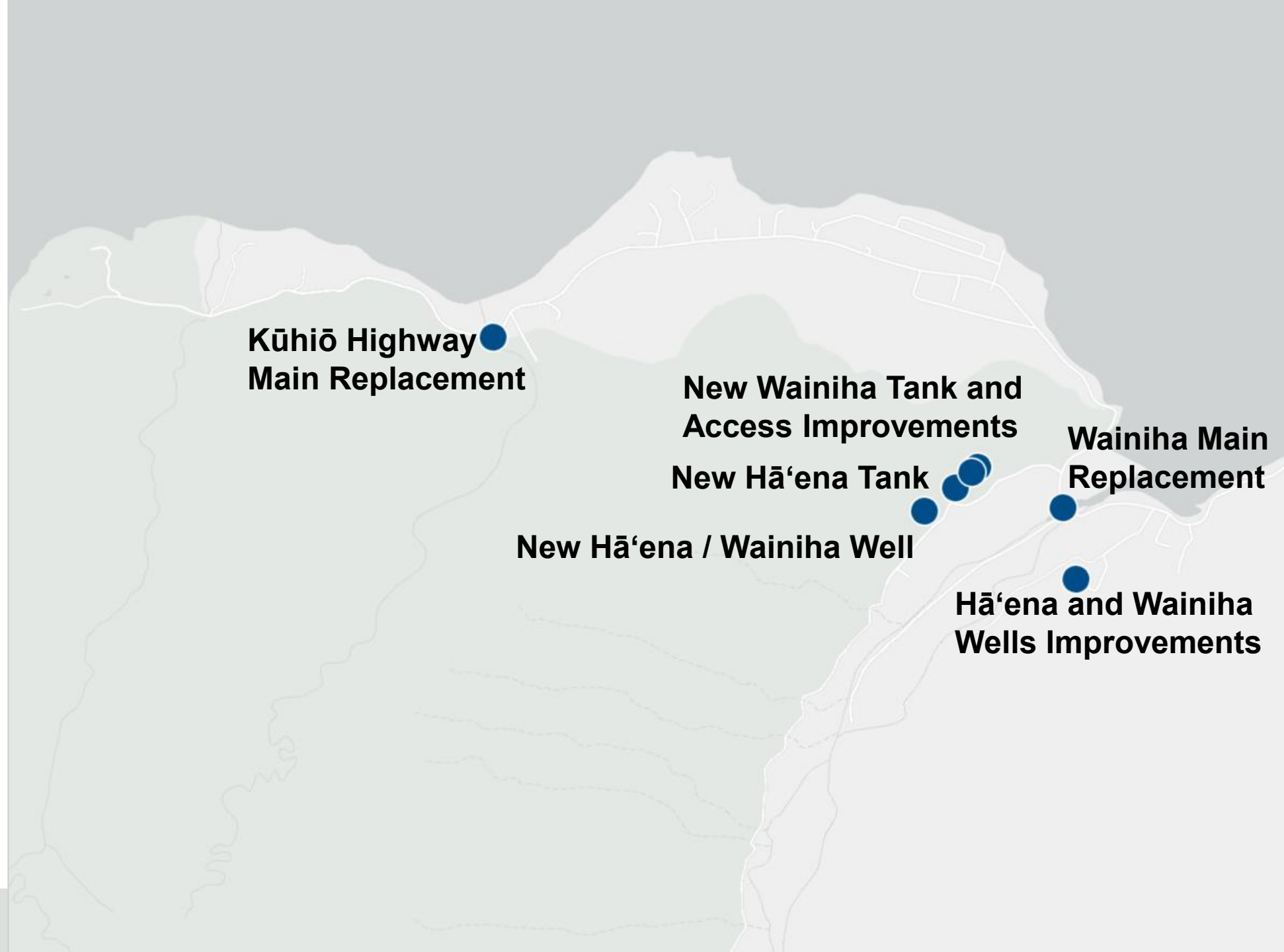
# Hā'ena & Wainiha Completed Projects

*Water infrastructure projects completed from 2001 - 2025*



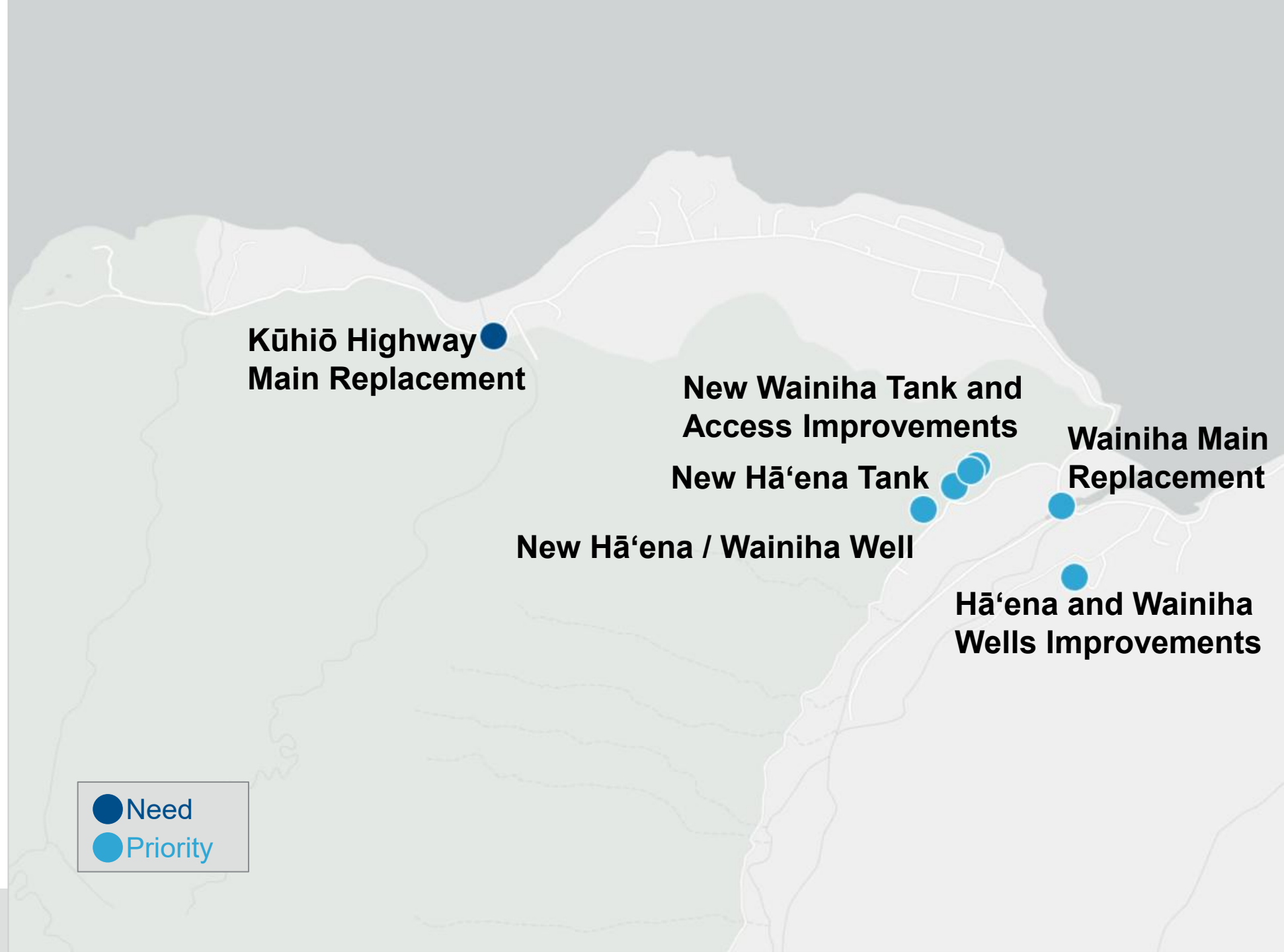
# Hā'ena & Wainiha Needs

*Water infrastructure project needs identified in the Water Systems Investment Plan*

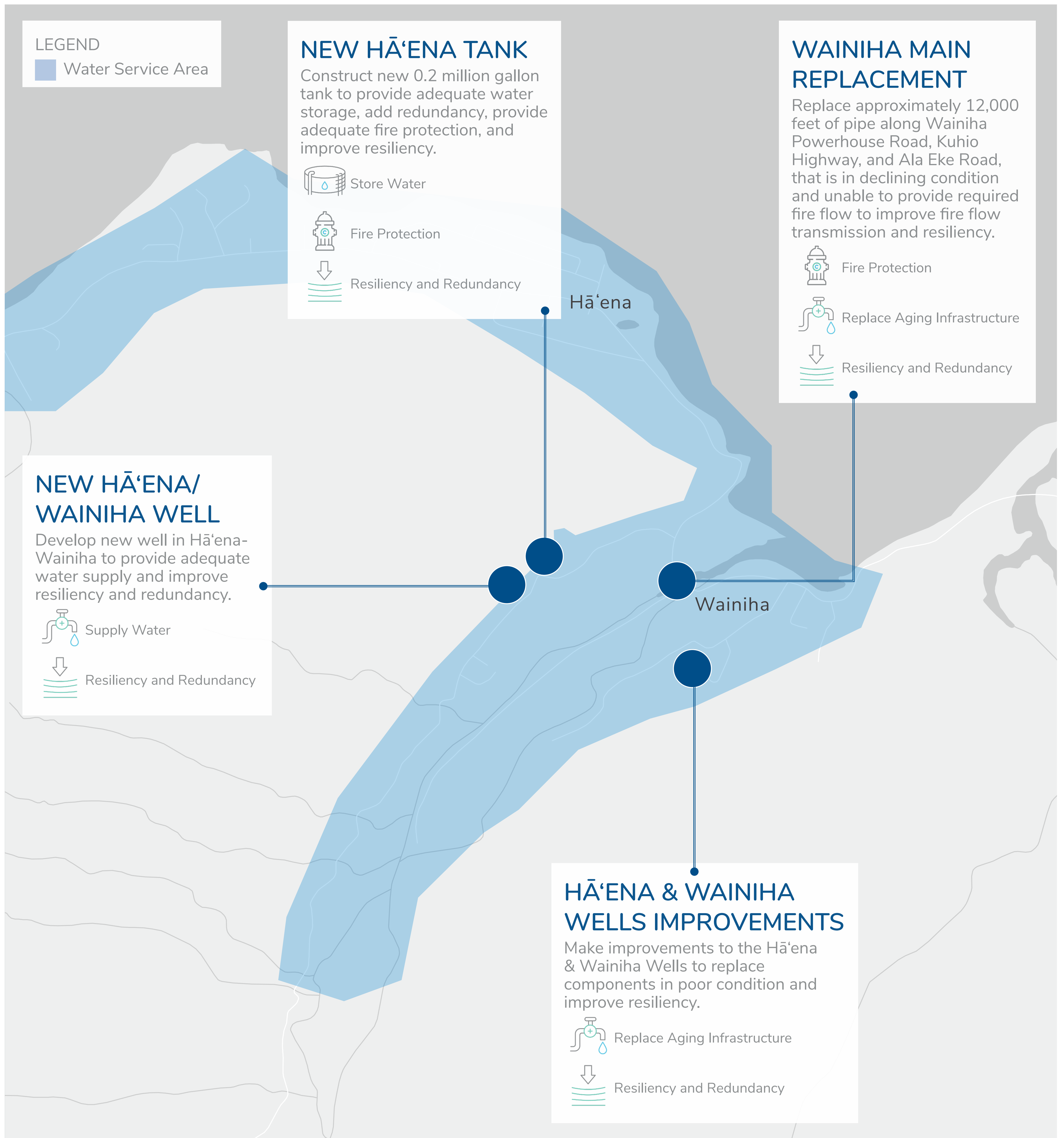


# Hā'ena & Wainiha Priorities

*Priority projects  
funded through  
the proposed rate  
increase*




# Example Priority Projects Hā'ena & Wainiha



## Questions or Comments?

 [publicrelations@kauaiwater.org](mailto:publicrelations@kauaiwater.org)

 (808) 245-5461 8:00AM to 4:30PM  
Mon-Fri (except holidays)

Scan for  
website

