



# Local View

## Anahola

# Anahola Overview

Approximately 4% of the island wide system

Parts of the system were constructed more than 90 years ago and will be more than 110 years old by the end of the planning period



# Anahola Completed Projects

*Water  
infrastructure  
projects  
**completed** from  
2001 - 2025*



**Anahola Tank Rehab** ● **New Anahola Well**

# Anahola Needs

*Water infrastructure project **needs** identified in the Water Systems Investment Plan*



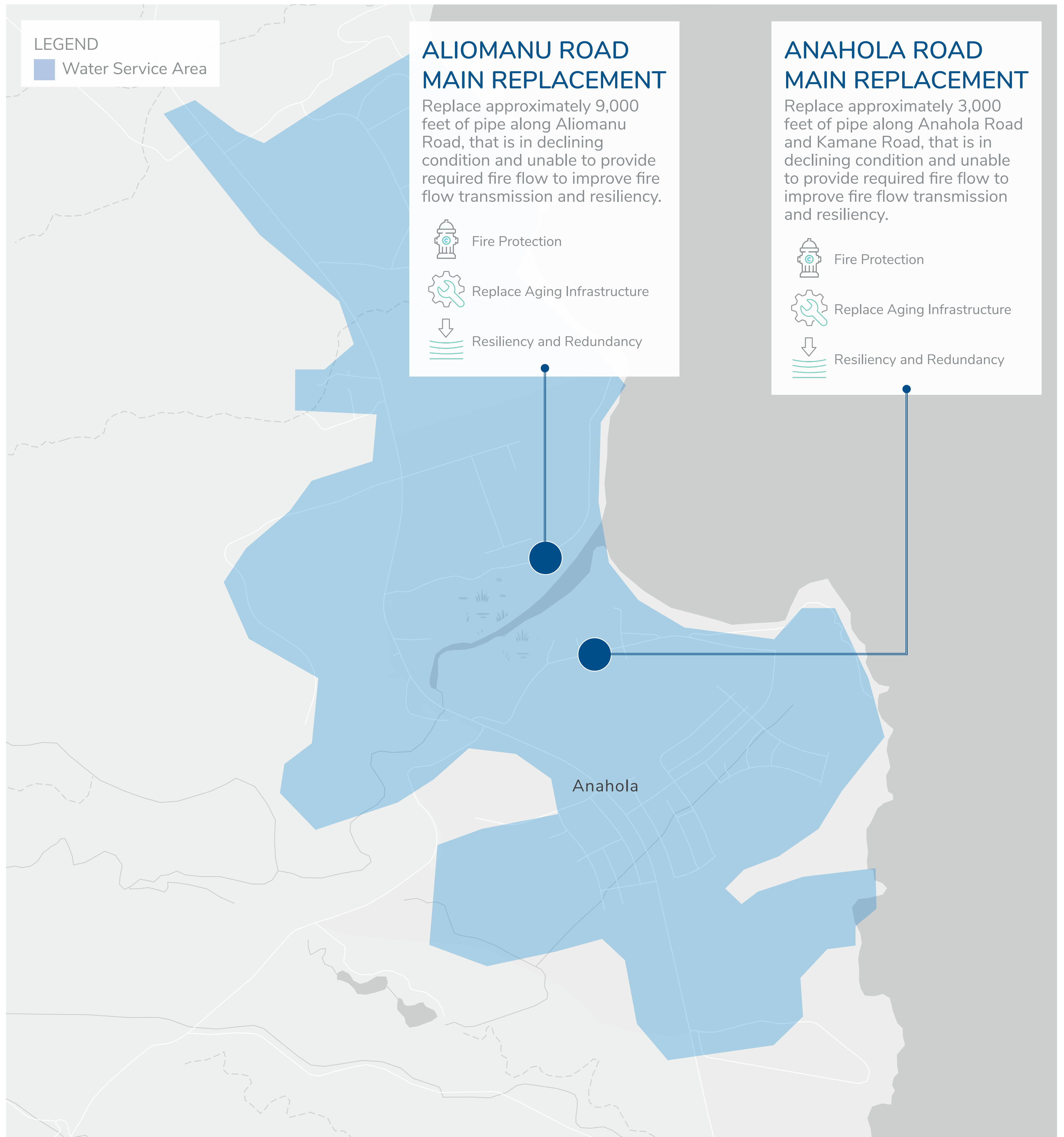
# Anahola Priorities

*Priority projects  
funded through  
the proposed rate  
increase*




# Example Priority Projects

# Anahola



## Questions or Comments?

 [publicrelations@kauaiwater.org](mailto:publicrelations@kauaiwater.org)

 (808) 245-5461 8:00AM to 4:30PM,  
Mon-Fri (except holidays)

Scan for  
website

