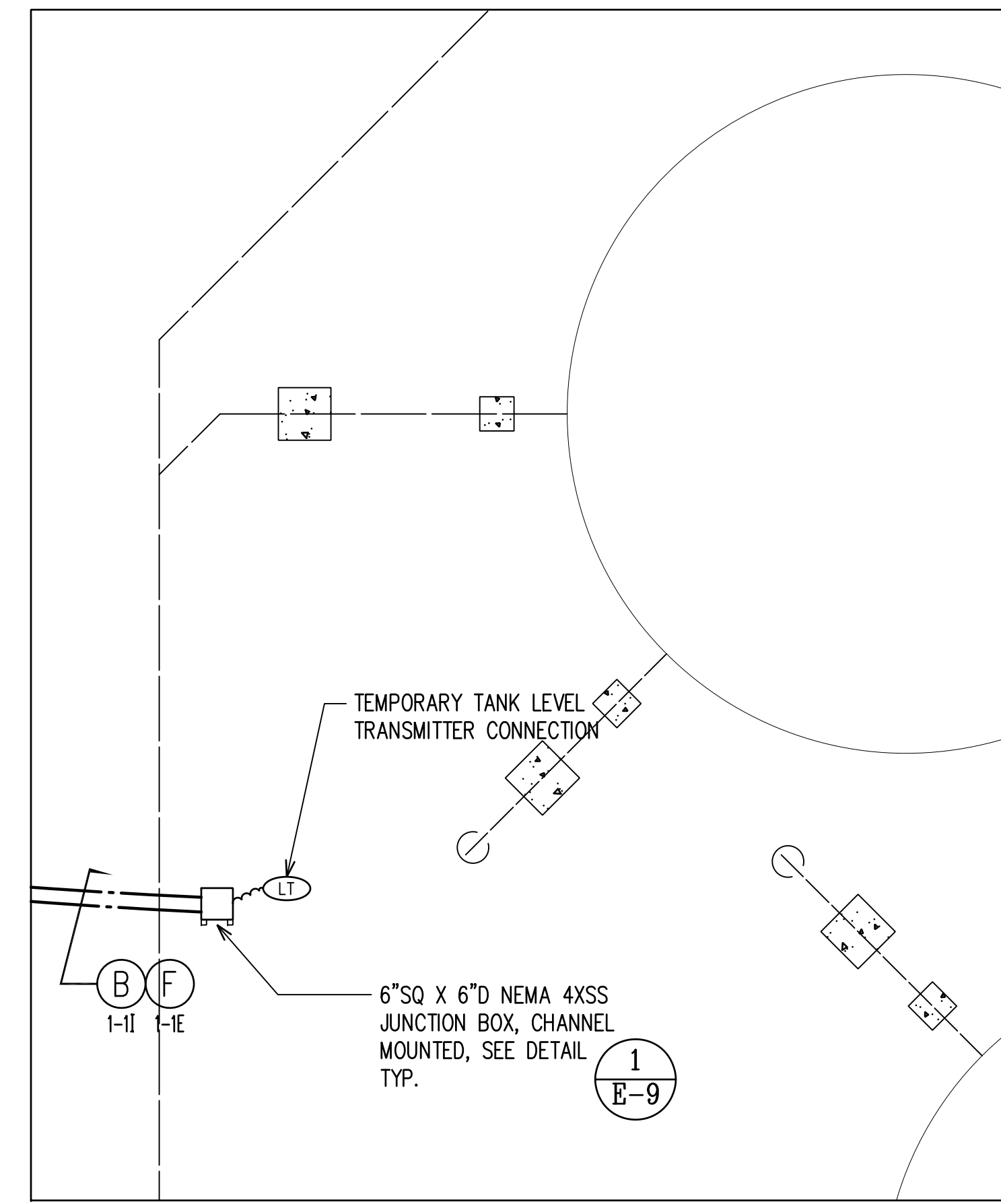
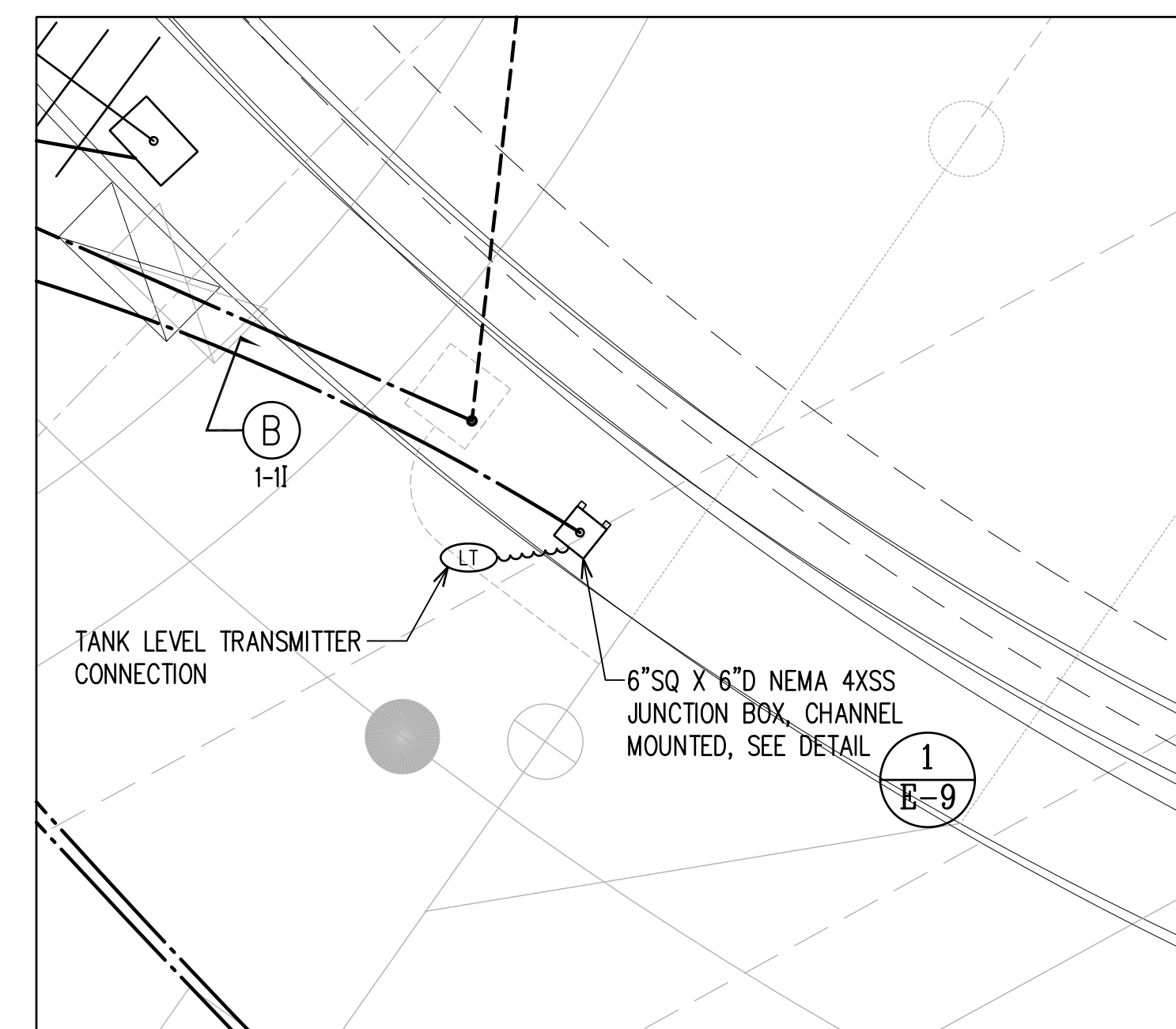


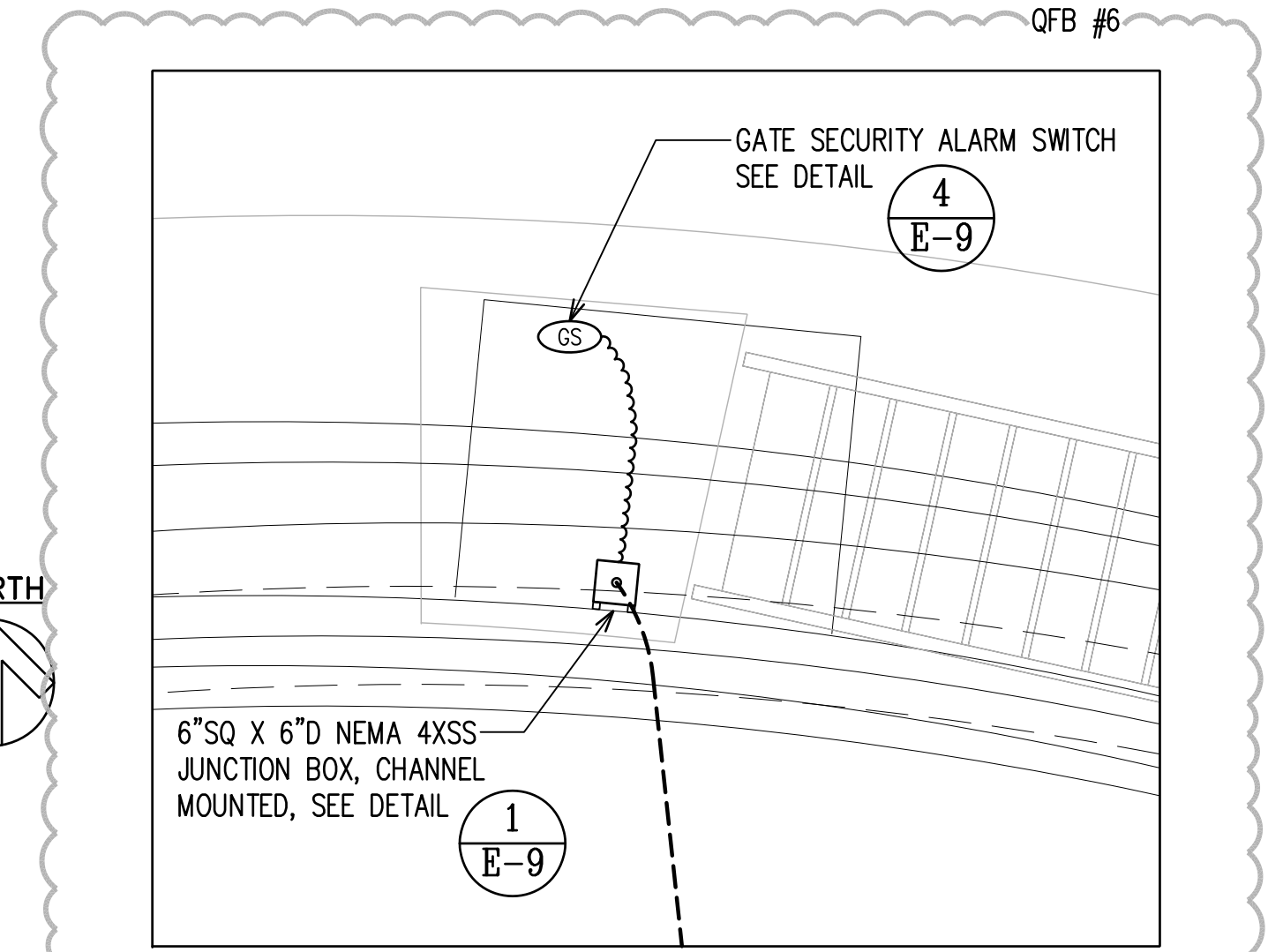
**1 ELECTRICAL POWER PLAN**  
E-5 SCALE: 1/2"=1'-0" NORTH



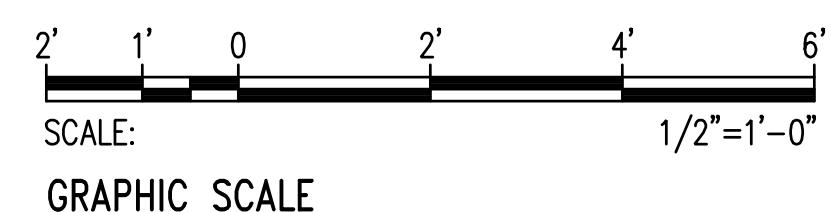
**2 TEMPORARY TANK POWER PLAN**  
E-5 SCALE: 1/2"=1'-0" NORTH



**3 TANK LEVEL TRANSMITTER  
POWER PLAN**  
E-5 SCALE: 1/2"=1'-0" NORTH



**4 STAIR SECURITY FENCE  
GATE POWER PLAN**  
E-5 SCALE: 1/2"=1'-0" NORTH



QFB #	3-24-2026	MISC. REVISIONS		
REVISION	DATE	DESCRIPTION	BY	APPROVED
<b>CONSTRUCT KILAUEA 466' TANK, 1.0MG</b>				
<b>ELECTRICAL POWER PLANS</b>				
		APPROVED:		
		<small>COUNTY ENGINEER, DEPT. PUBLIC WORKS, COUNTY OF KAUAI</small> <small>DATE</small> <small>APPROVED:</small>		
<small>This work was prepared by me or under my supervision and construction to this project will be under my observation.</small> 		<small>MANAGER &amp; CHIEF ENGINEER, DEPT. OF WATER, COUNTY OF KAUAI</small> <small>DATE</small>		
		<b>E-5</b>		
<b>KODANI AND ASSOCIATES ENGINEERS, LLC</b> LIHU'E, KAUAI, HAWAII, 96766				
DESIGNED BY: <b>BD</b>	DRAWN BY: <b>CAD</b>	DATE: <b>30-JAN-2026</b>	SHEET <b>61</b> OF <b>65</b> SHEETS	