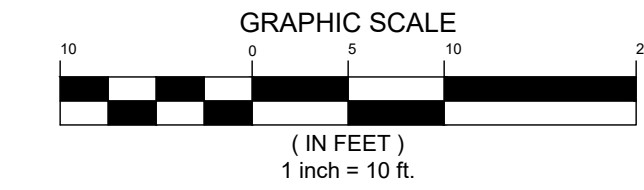
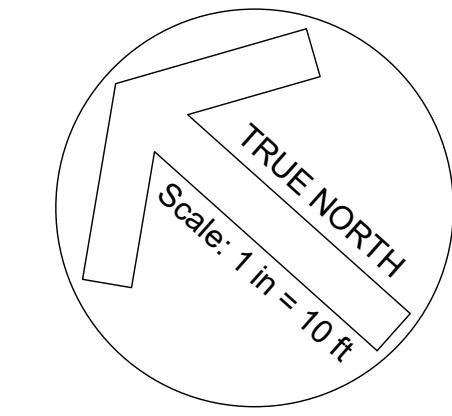


**LOT COVERAGE NOTES:**

Description	Area (Sq.Ft.)
Kilauea Tank Parcel	22,888
1.0 MG Tank (to edge of footing)	7,959
Concrete Pavement	3,980
Concrete Swale	826
SCADA Pad	25
Total Hardened Area	12,789

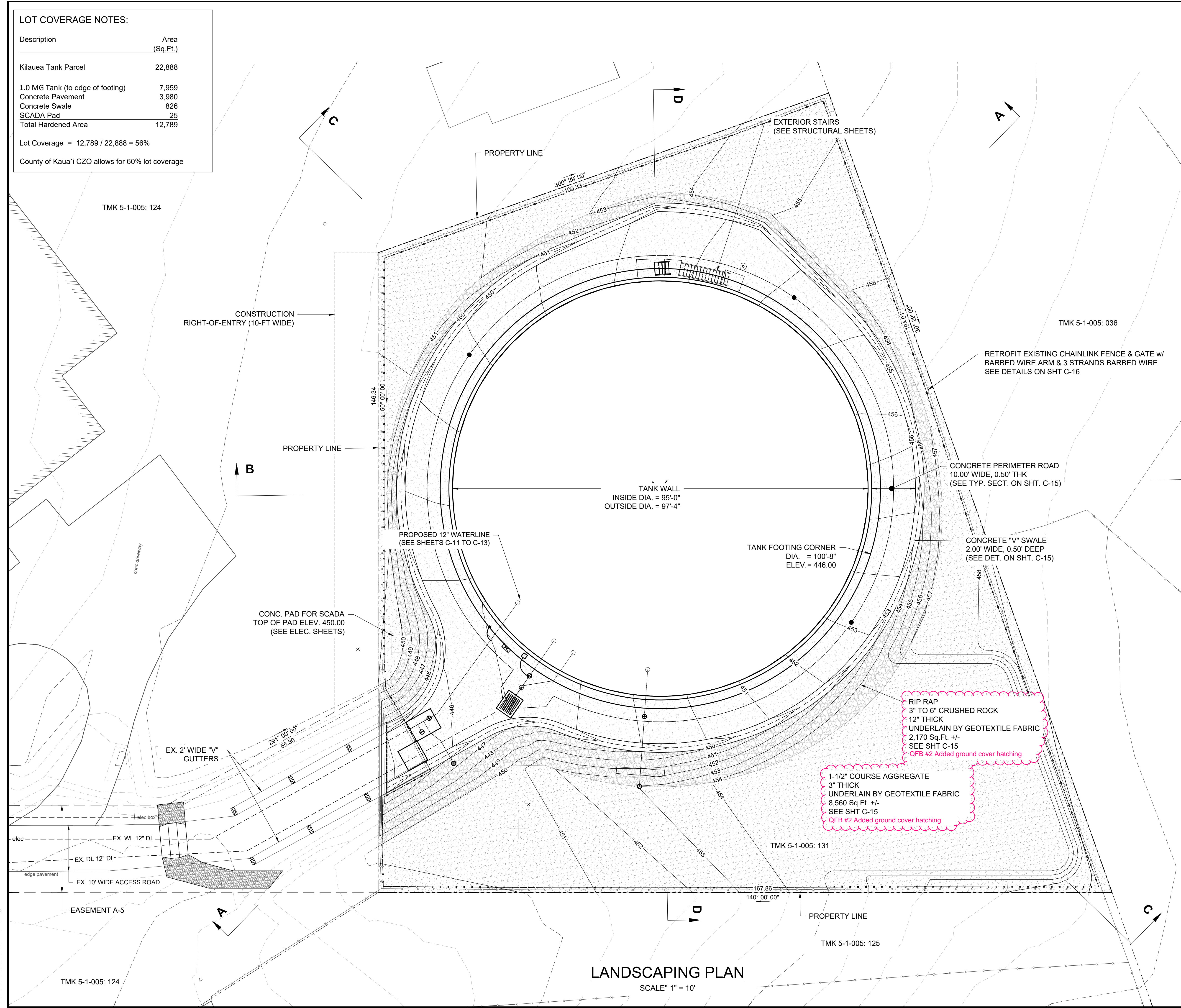
Lot Coverage = 12,789 / 22,888 = 56%

County of Kauai CZO allows for 60% lot coverage



**LEGEND**

- PROPERTY LINE
  - - - EASEMENT BOUNDARY
  - x-x- CHAIN-LINK FENCE
  - x-x- DUST SCREEN
  - - - EX. ELEV. CONTOUR
  - - - FINISH ELEV. CONTOUR
  - CONCRETE
  - RIP RAP, GROUND COVER
  - 1-1/2' COURSE AGGREGATE, GROUND COVER
- QFB #2 Added ground cover hatching*



	<p>REVISION</p> <p>QFB #2 3/11/2026 Added ground cover hatching</p>
	<p>DATE</p> <p>DESCRIPTION</p> <p>BY</p> <p>APPROVED</p>
<p><b>CONSTRUCT KILAUEA</b> <b>466' TANK, 1.0 MG</b></p>	
<p><b>LANDSCAPING PLAN</b></p>	
<p>APPROVED:</p> <p><i>W. Eddy</i> Exp. 4/26 Signature</p>	<p>DATE</p> <p>02/02/2026</p> <p>BY MANAGER &amp; CHIEF ENGINEER, DEPT. OF WATER, COUNTY OF KAUAI</p>
<p><b>KODANI &amp; ASSOCIATES ENGINEERS, LLC</b> LIHUE, KAUAI, HAWAII 96766</p>	
<p>DESIGNED BY: ATM</p>	<p>DRAWN BY: TP.</p>
<p>DATE: 01-28-2026</p>	<p><b>SHEET 10 OF 65</b></p>

260128 Kilauea Tank 04-4014.dwg