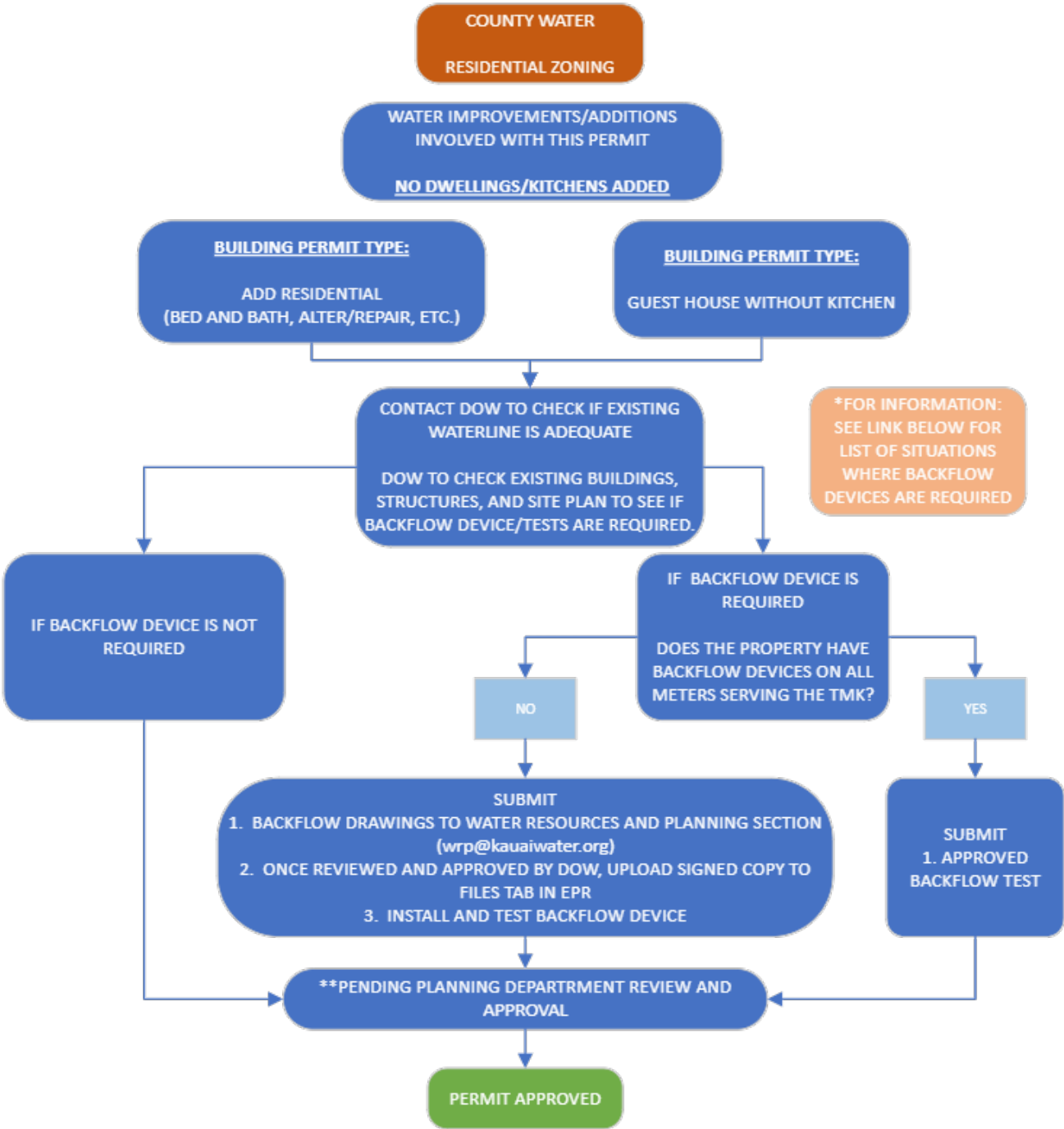




JOSEPH E. TAIT
MANAGER AND CHIEF ENGINEER

MICHAEL K. HINAZUMI, P.E.
DEPUTY MANAGER-ENGINEER



*BACKFLOW DEVICE REQUIREMENTS LINK: <https://www.kauaiwater.org/wp-content/uploads/WSS100.pdf> (PAGES 107-1 THROUGH 107-5)
**PLANNING DEPARTMENT APPROVAL NEEDED FOR PROPOSED STRUCTURE TO CONFIRM THAT NO DWELLINGS/KITCHENS ARE BEING ADDED

FOR QUESTIONS: EMAIL - wrp@kauaiwater.org